

## Fan types T-200-300K and T200-300D

The indirect driven centrifugal fan types T-200K – T-300K and direct driven fan types T-200D – T-300D is designed for concentrated material handling over long distances.

The impellers are available in 2 versions, an open T-impeller for coarse-grained or rather long material types and a closed P-impeller for dust particles (< 2 mm).

The impeller for paper is always made as open T-impeller with 6 blades.

T-impeller is available in wear-resistant material in quality HB-400. The impeller is statically and dynamically balanced.

The fan is available with stainless steel inlet and explosion-proof (Eex) motor.

The pulleys are fitted with taperlock. This means that they can be easily re-placed if the number of revolutions has to be changed.

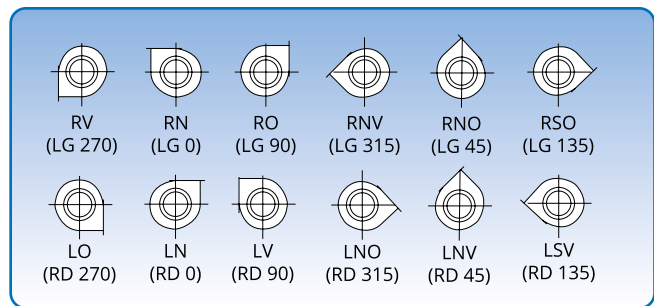
Max. internal operating temperature: 60°C

With cooling wings: Up to 200°C (only K-models)

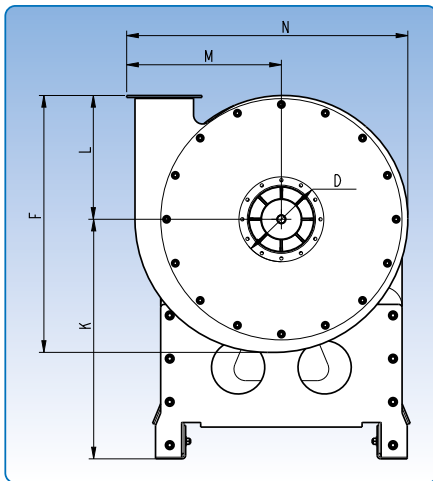
The inlet (D) is supplied with flange as standard.

Specific dimensions for the outlet flanges can be found under “Flanges”.

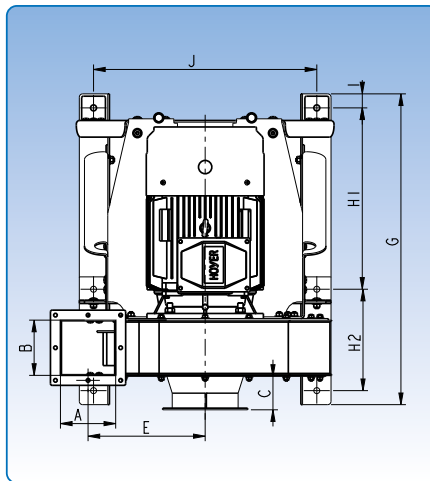
The technical data for each type appears on the following pages. Effects measured according to ISO 5801.



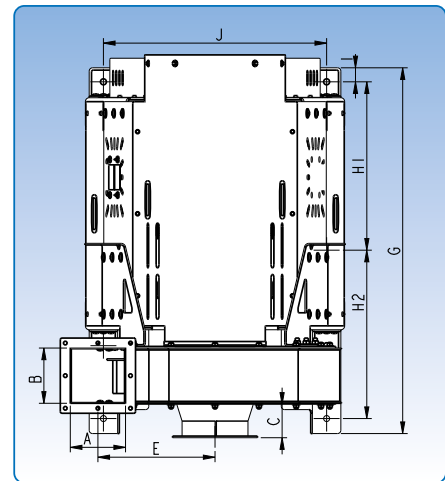
6 positions. The position illustrations are viewed from the inlet side.



T-D/K



T-D



T-K

Type	Dimensions															Weight without motor kg
	A mm	B mm	C mm	D mm	E mm	F mm	G mm	H1 mm	H2 mm	I mm	J mm	K mm	L mm	M mm	N mm	
T-200K	166	166	100	200	352	896	1099	506	506	42	671	720	496	454	834	257
T-300K	326	226	75	300	380	1076	1255	584	584	42	786	860	591	533	971	371
T-200D	166	166	100	200	352	896	934	305	545	38	671	720	496	454	834	219
T-300D	326	226	75	300	380	1076	1110	366	660	38	760	860	591	533	971	328